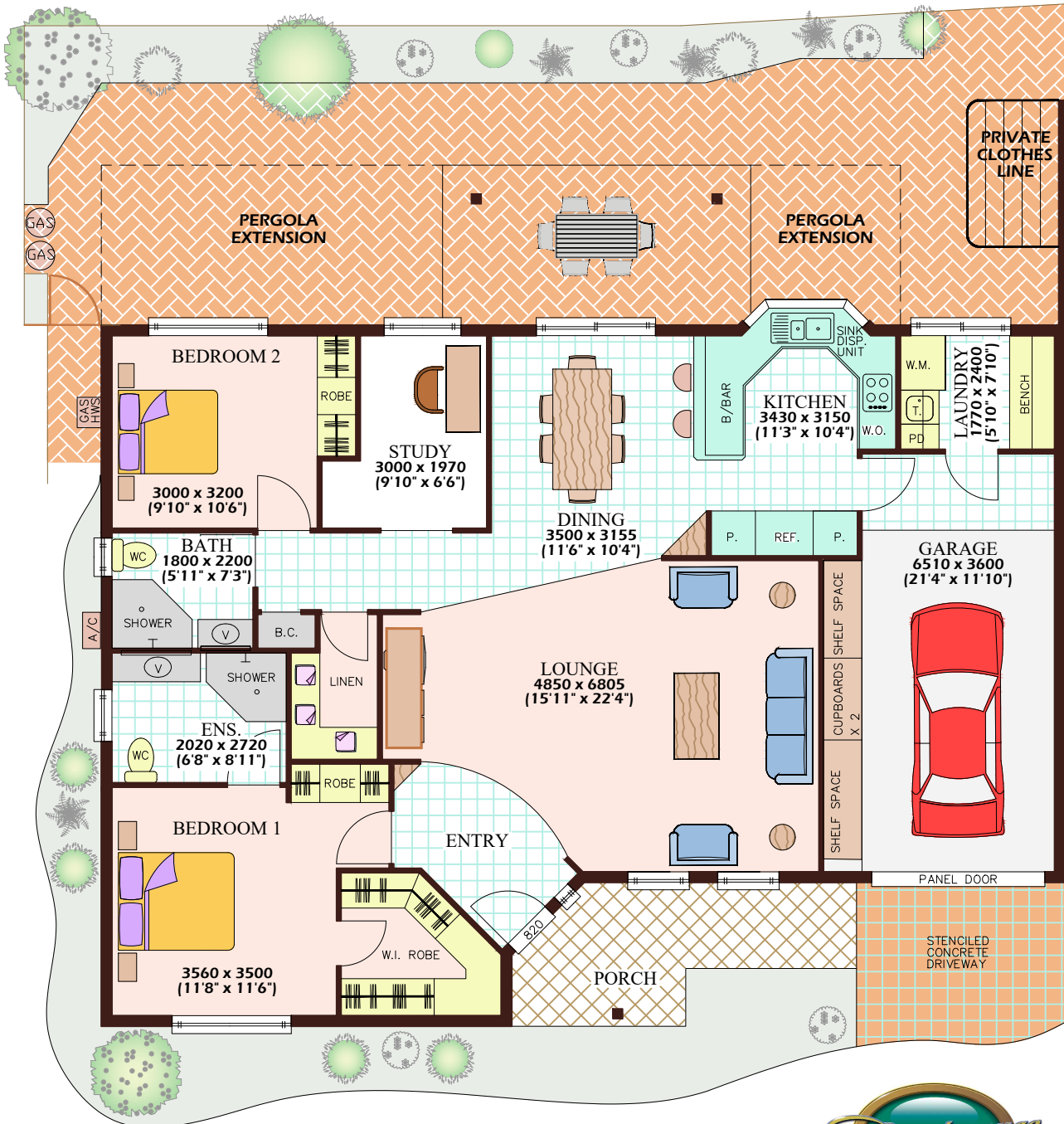


PEEL

2 BEDROOM PLUS STUDY INDEPENDENT LIVING
ACCOMMODATION UNIT WITH SINGLE GARAGE

Area 145.3m² (15.64 squares)



A QUALITY DEVELOPMENT FROM
RENAISSANCE RETIREMENT LIVING

PEEL MK 1

TWO BEDROOM PLUS STUDY INDEPENDENT LIVING ACCOMMODATION UNIT WITH GARAGE



Schedule of Finishes, Fixtures and Fittings

Dining / Lounge

- * Variable speed ceiling fan (Original)
- * 2 Television outlets & 6 power points
- * Super quality carpet to lounge (New)
- * Tile flooring to dining & hallway
- * Tiled entry

Kitchen

- * Built-in cupboards, two-pack finish with composite stone bench
- * One & a half bowl stainless steel sink with quality flickmixer tap
- * Glass splashback
- * Microwave (New) & European hot plates
- * European wall oven (Original)
- * Exhaust fan over hot plates (Original)
- * Dishwasher (Original)
- * Tiled flooring
- * LED lighting
- * 2 double power points
- * Pantry cupboard, two-pack finish
- * Garbage disposal unit (Original)
- * Telephone socket & Television outlet

Bedroom 1

- * Variable speed ceiling fan (Original)
- * Built-in robe with bifold doors, fitted with drawers, shelves, hanging rods in melamine finish
- * Walk-in robe fitted with drawers, shelves, hanging rods in melamine finish
- * Full length mirror to rear of bedroom door
- * Television outlet, 3 power points & telephone socket
- * Superior quality carpet (New)

Ensuite

- * Shower with flexible hand set & grab rail
- * Vanity unit and basin, silestone benchtop, mirror over
- * Exhaust fan and heater light, 1 power point
- * Wall and floor tiles to wet areas
- * Shower cubicle with frameless laminated glass screen & door
- * Quality flickmixer taps
- * WC fitted with adjacent grab rail

Bedroom 2

- * Variable speed ceiling fan (Original)
- * Built-in robe with bifold doors, fitted with drawers, shelves, hanging rods in melamine finish
- * Television outlet, 3 power points
- * Superior quality carpet (New)

Study

- * Variable speed ceiling fan (Original)
- * Superior quality carpet (New)
- * Telephone socket
- * 2 power points

Bath / WC

- * Shower with flexible hand set & grab rail
- * Vanity unit and basin, silestone benchtop, mirror over
- * Exhaust fan and heater light, 1 power point
- * Wall and floor tiles to wet areas
- * Shower cubicle with frameless laminated glass screen & door
- * Quality flickmixer taps
- * WC fitted with adjacent grab rail

Laundry

- * Ceramic laundry tub with quality flickmixer tap
- * Sewing bench with overhead cupboards, two-pack finish
- * Floor tiles
- * Wall tiles to splashback
- * Telephone socket
- * 2 power points

Garage

- * Panel lift colourbond door with remote control
- * LED lighting
- * 3 power points
- * Storage shelf

Porch & Courtyard

- * Fold-down clothesline
- * 2 Waterproof power points to courtyard
- * Sensor light fitted to porch, spotlight fitted to courtyard
- * Courtyard fully enclosed by fence with gate

Generally

- * Emergency call activator supplied
- * All walls with vinyl finish paint
- * All ceilings with vinyl finish paint
- * Doors, architraves and skirting with gloss enamel paint finish
- * LED lighting throughout Unit
- * Sliding powder coated aluminium windows
- * Security screens to opening windows and doors
- * Front door with glass infill
- * Internal flush panel doors
- * Walk-in linen cupboard
- * Smoke detector - mains supply (battery backup)
- * Gas hot water service
- * Landscaping to front and rear
- * 3000 litre rainwater tank

Unit 1006 - updated 26.10.2021