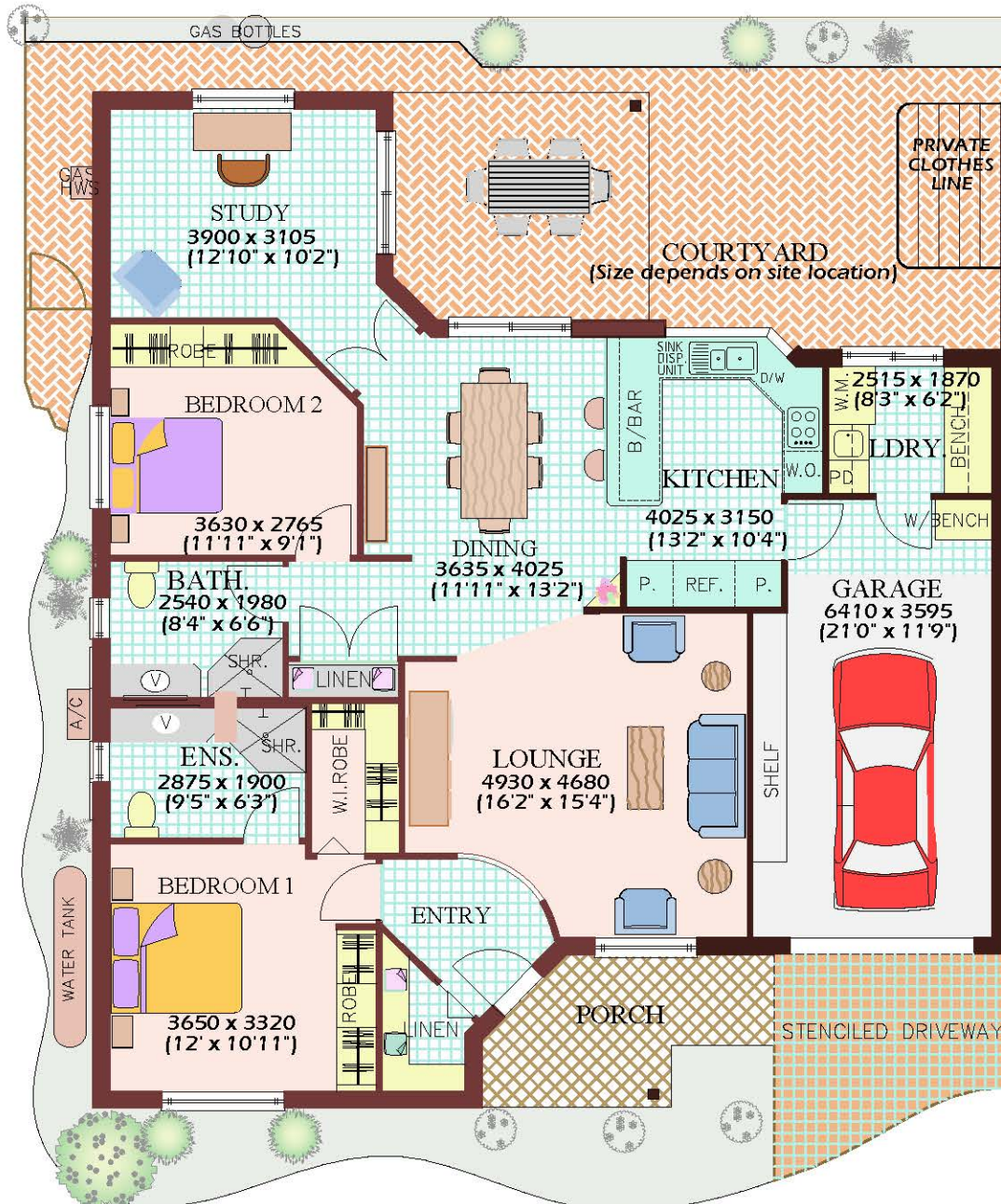


STRADBROKE MK4

2 BEDROOM PLUS STUDY INDEPENDENT LIVING

ACCOMMODATION UNIT WITH GARAGE

Area 149.0 m² (16.02 squares)



A QUALITY DEVELOPMENT FROM
RENAISSANCE RETIREMENT LIVING

27/09/2021 - 08 /810

DISCLAIMER: Renaissance VP Pty Ltd reserves the right to amend floor plans at any time without notice. Issued 09/21. This plan is not to scale and is for marketing purposes only. Some variations from this plan may apply after construction to sizes, finish and layout. Some items shown are not included - refer to the schedule for fixtures and fittings.

COPYRIGHT: This plan is and shall remain the property of Renaissance VP Pty Ltd. Unauthorised use of this plan in any form whatsoever is prohibited.

© Renaissance VP Pty Ltd ACN 128 509 286

STRADBROKE MK 4

TWO BEDROOM PLUS STUDY
INDEPENDENT LIVING
ACCOMMODATION UNIT WITH GARAGE



Schedule of Finishes, Fixtures and Fittings

Dining / Lounge

- * Variable speed ceiling fan (NEW)
- * 2 Television outlets
- * 5 power points
- * Superior quality carpet to lounge (NEW)
- * Tiled flooring to dining
- * Tiled entry

Kitchen

- * Built-in cupboards, two-pack finish with composite stone benchtops
- * One & a quarter bowl stainless steel sink with quality flickmixer tap
- * Glass splashback
- * Dishwasher (NEW)
- * Microwave (NEW)
- * European wall oven (NEW) and hot plates (NEW)
- * Slimline exhaust fan over hot plates (NEW)
- * Tiled flooring
- * LED Lighting (NEW)
- * 2 double power points
- * Pantry cupboard, two-pack finish
- * Garbage disposal unit (NEW)
- * Telephone socket
- * Television outlet

Bedroom 1

- * Variable speed ceiling fan (NEW)
- * Built-in robe with bifold doors, fitted with drawers, shelves, hanging rods in melamine finish
- * Walk-in robe fitted with drawers, shelves, hanging rods in melamine finish
- * Full length mirror to rear of bedroom door
- * Television outlet and power point
- * Telephone socket, 2 power points
- * Superior quality carpet (NEW)

Ensuite

- * Shower with flexible hand set & grab rail (NEW)
- * Vanity unit and basin, silestone benchtop, mirror over
- * Exhaust fan and heater light, 1 power point
- * Wall and floor tiles to wet areas
- * Shower cubicle with frameless laminated glass screen and door (NEW)
- * Quality flickmixer taps
- * WC fitted with adjacent grab rail

Bedroom 2

- * Variable speed ceiling fan (NEW)
- * Built-in robe with bifold doors, fitted with drawers, shelves, hanging rods in melamine finish
- * Television outlet, 3 power points
- * Superior quality carpet (NEW)

Study

- * Variable speed ceiling fan (NEW)
- * Ceramic tile flooring
- * Telephone socket
- * Television outlet
- * 2 power points

Bath / WC

- * Shower with flexible hand set & grab rail (NEW)
- * Vanity unit and basin, silestone benchtop, mirror over
- * Exhaust fan and heater light, 1 power point
- * Wall and floor tiles to wet areas
- * Shower cubicle with frameless laminated glass screen & door
- * Quality flickmixer taps (NEW)
- * WC fitted with adjacent grab rail

Laundry

- * Ceramic laundry tub with quality flickmixer tap
- * Sewing bench with overhead cupboards, two-pack finish
- * Tiled flooring
- * Wall tiles to splashback
- * Telephone socket
- * 2 power points

Garage

- * Panel lift colourbond door with remote control
- * LED Lighting (NEW)
- * 2 double power points
- * Workbench
- * Storage shelf

Porch & Courtyard

- * Fold-down clothesline
- * 2x Waterproof power points to courtyard
- * Sensor light fitted to porch; spotlight fitted to courtyard
- * Courtyard fully enclosed by fence with gate

Generally

- * Emergency call button supplied
- * All walls with vinyl finish paint
- * All ceilings with vinyl finish paint
- * Doors, architraves and skirting with gloss enamel paint finish
- * Recessed ceiling lights throughout Unit - 40% of lighting installed is energy efficient
- * Sliding powder coated aluminium windows
- * Security screens to opening windows and doors
- * Front door with glass infill
- * Internal flush panel doors
- * Broom closet and linen cupboard
- * Smoke detector - mains supply (battery backup)
- * Gas hot water service LED Lighting (NEW)
- * Landscaping to front and rear tank
- * 3000 litre rainwater

Unit 810 - updated 06.10.21